



CLOUDHOOD RETAIL COMPONENTS INTEGRATION MANUAL

CLOUD CONNECTION SETTINGS

Will be provided by web administrator. Cloud Server for the store.

SETTINGS UTILITIES IMPORT/EXPORT **CLOUD CONNECTION** OTHER

DELI ONLINE ORDER

DB Name on Web

Web Server Host

Web Server User Id

Web Server Password

Test Connection

CONNECT TO CLOUD

DB NAME ON WEB
Store_2

WEB SERVER HOST
http://131.106.6.17:6464/uniberseposInvcloud/

WEB SERVER USER ID
admin

WEB SERVER PASSWORD
●●●●●●●●

Test Connection

CATERING SERVICE

LOCAL SERVER IP - POS->Setup-> General Option -> Internet

GENERAL **INTERNET** OPERATION

CONNECTION SETTING

SERVER IP
131.106.6.17

PORT
9510

Test Connection

CENTRAL SERVER *Inventory, Store Giftcard & Reward

CONNECT TO CENTRAL SERVER FOR GIFTCARD

SERVER IP
localhost

PORT
9501

Test Connection

CENTRAL SERVER SETUP CLOUD

UNIBERSE CENTRAL OFFICE Build: 201...

Store List

- Cloud Inventory
- Cloud Gift Card
- Cloud Reward Points

MASTER INVENTORY

Items | Department | Category | Vendors | Manage Attributes

INVENTORY CONTROL

Inventory Transfer

CLOUNDING CONNECTION

CONNECTION SETTING

STORE NAME
beauty store

IP ADDRESS
131.106.6.17

NETWORK PORT
6464

CONTEXT PATH
uniberseposinvcloud

LOGIN

ADMIN ID
admin

PASSWORD
●●●●●●●●

Cancel OK

This is the Cloud Server for the store. Information will be provided by web administrator

Windows | Minimize | Setup Office | Setup Cloud | Logout

CENTRAL SERVER STORE CONNECTION

SETUP CENTRAL OFFICE

Setup Stores

- Setup Users
- Other Setting

Spring Garden
Lancaster
STORE C

STORE CONNECTION

CONNECTION SETTING

STORE NAME
Spring Garden

IP ADDRESS
131.106.6.17

NETWORK PORT
9510

NVR IP Address

CLOUD CONNECTION

Connect this store to cloud server

Store ID*

LOGIN

ADMIN ID
Admin

PASSWORD
●●●●

Cancel OK

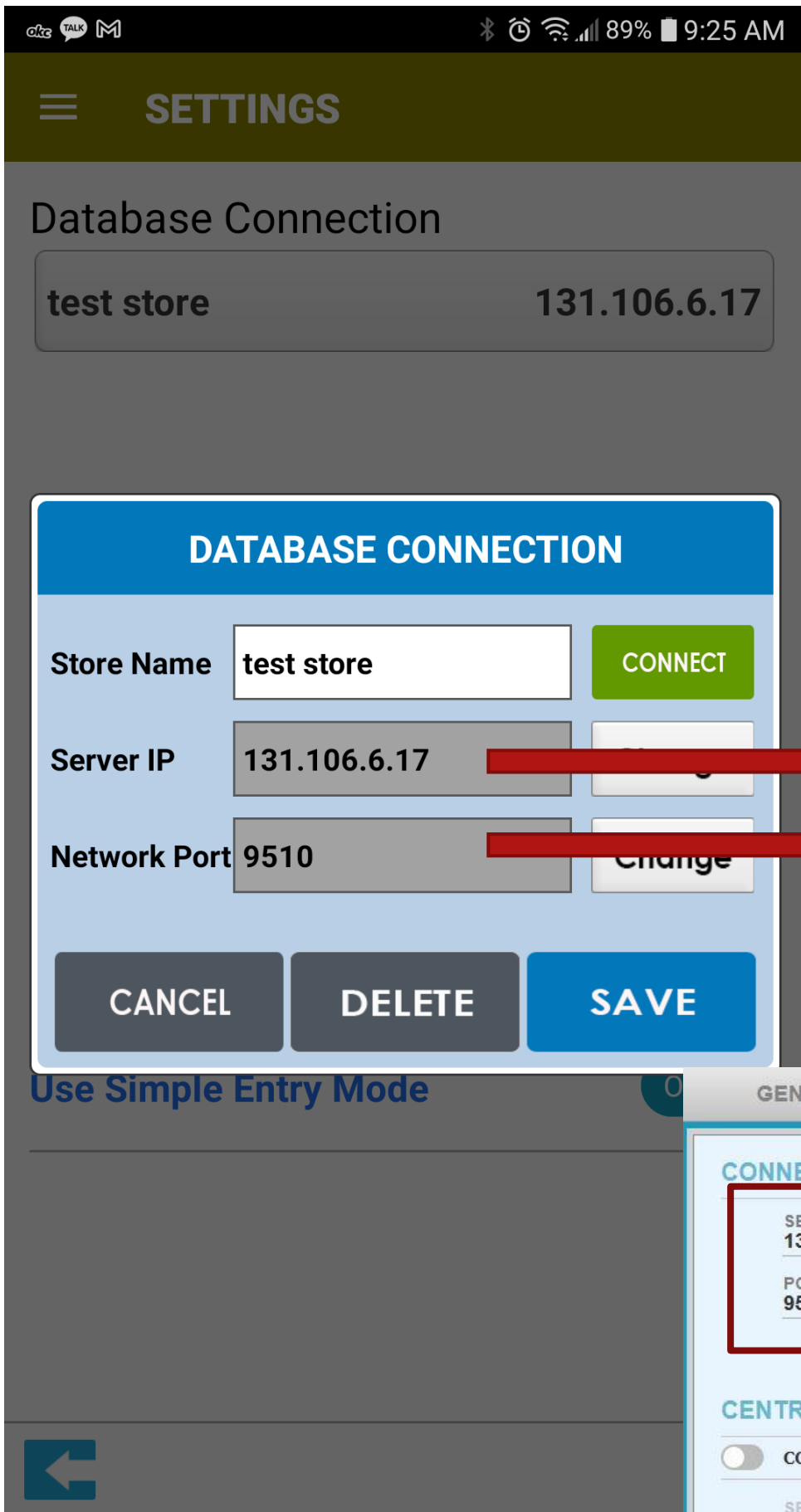
Enter store external IP. Use port forwarding from router/modem to local POS server IP.

This is the login for local POS.

Add | Edit | Delete

Cancel Done

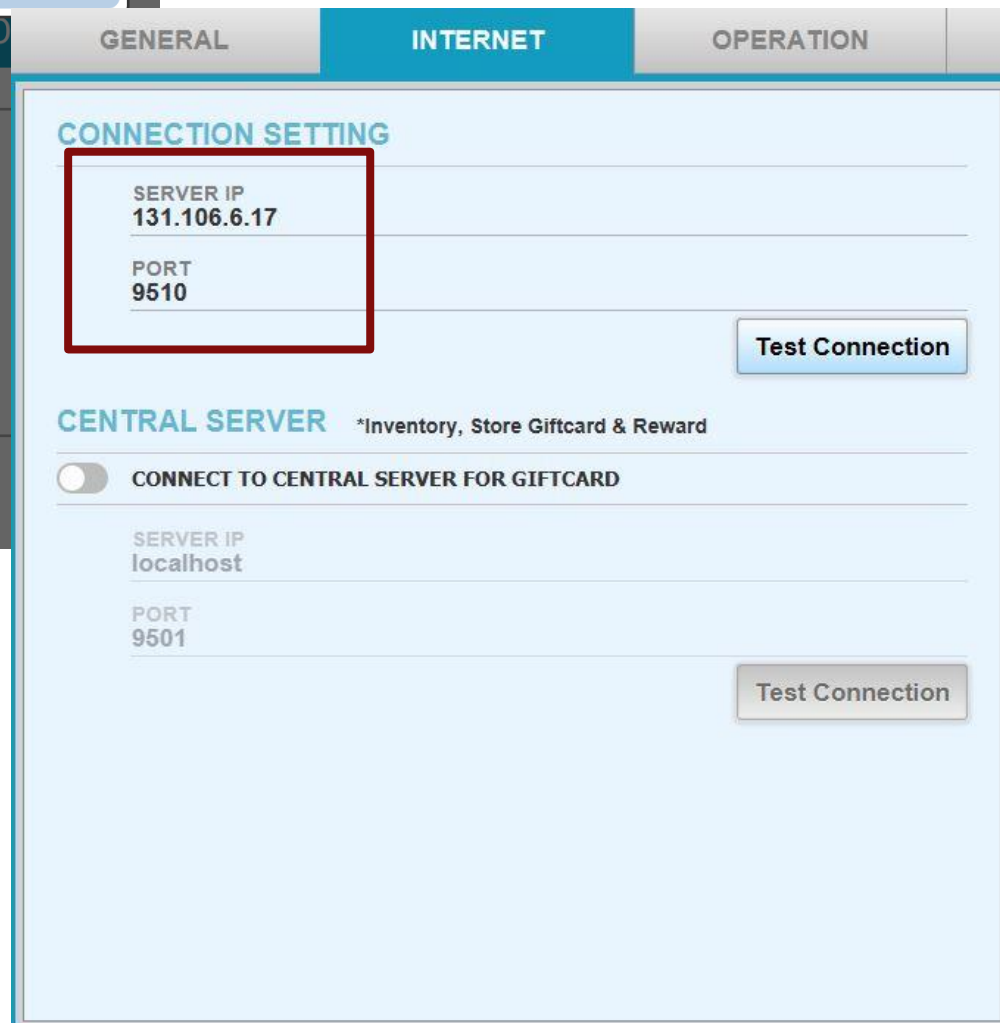
MOBILE INVENTORY APP CONNECTION



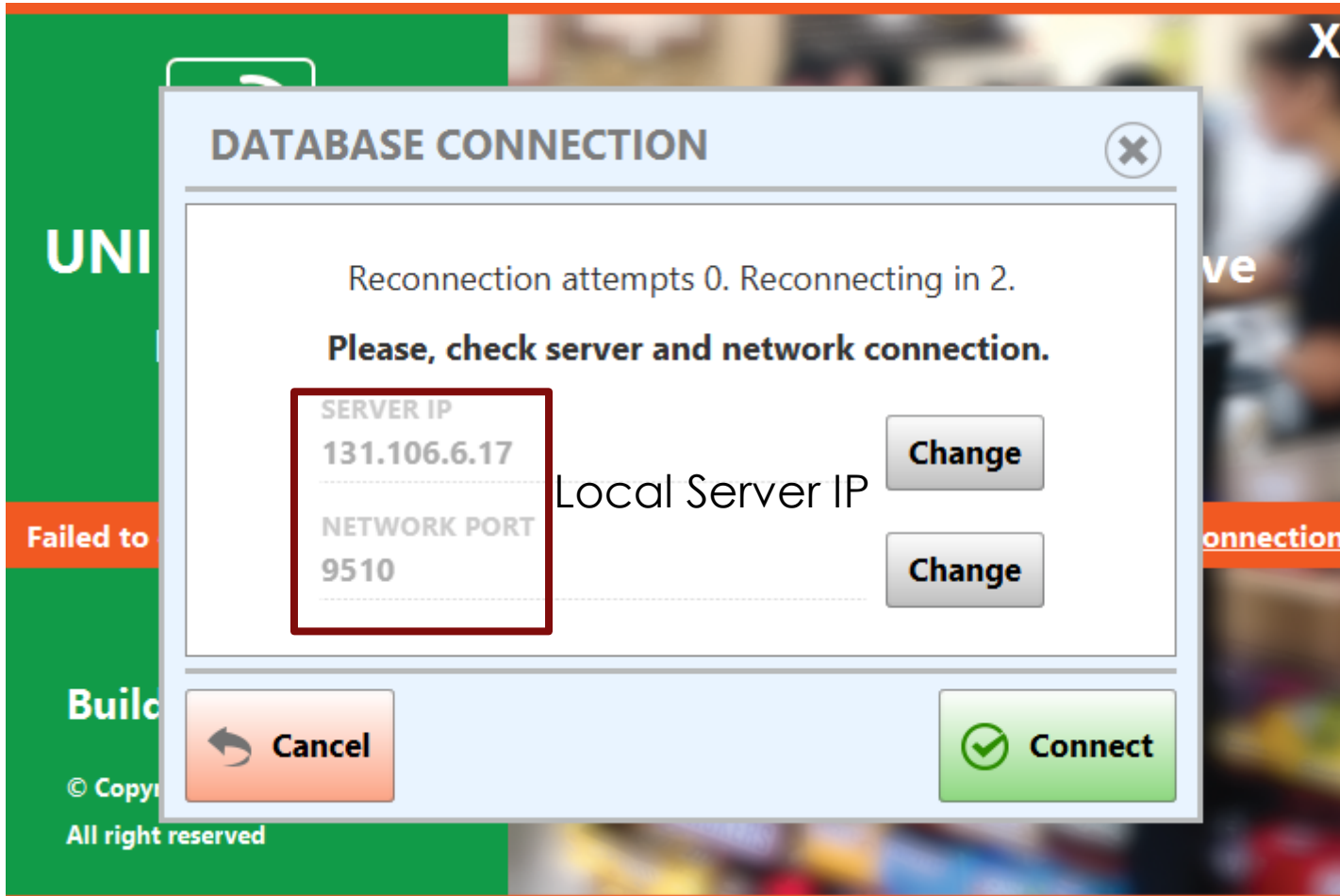
Local Server IP

Local Server PORT

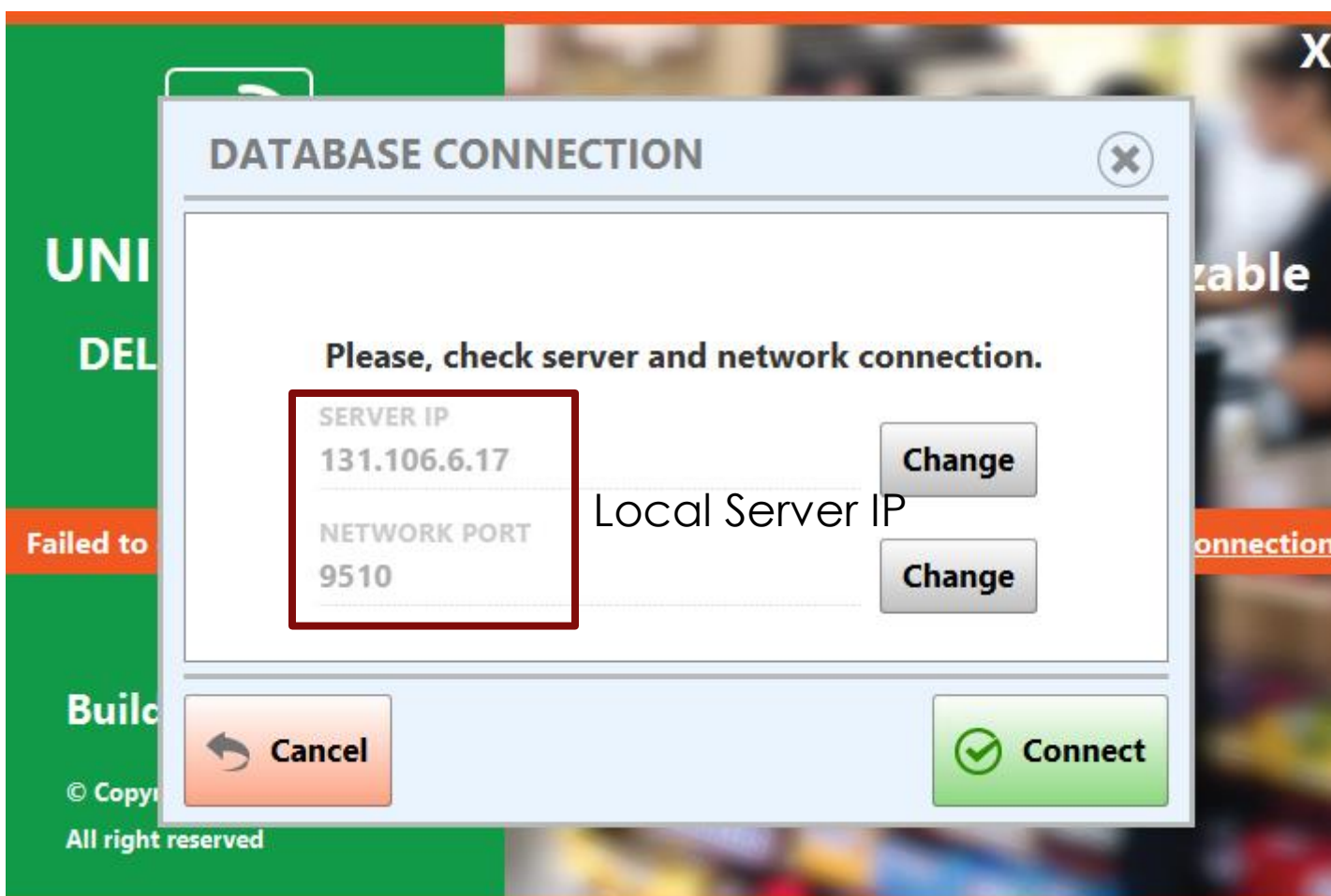
They can be found on POS->Setup-> General Option -> Internet



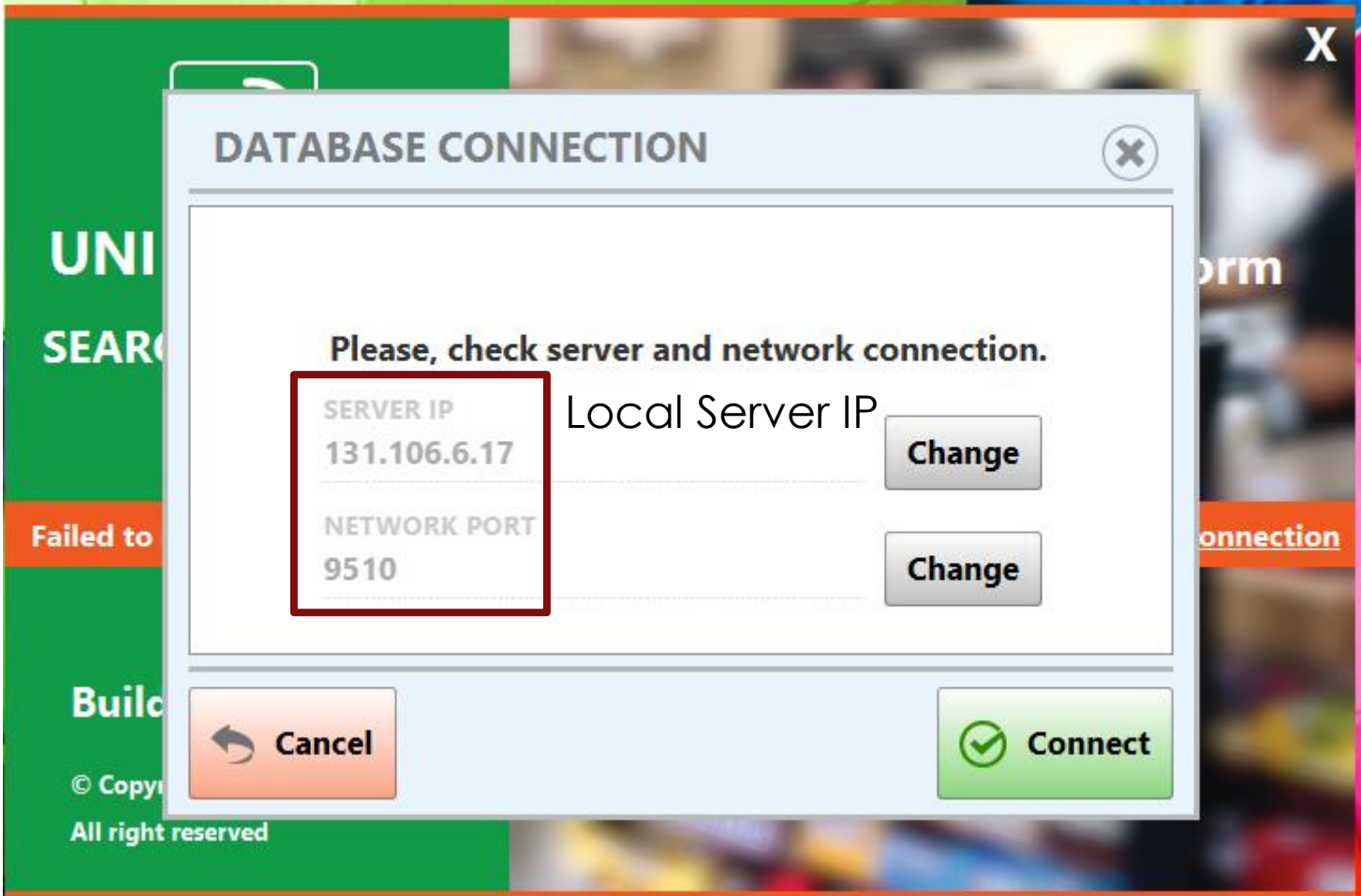
CLOUDHOOD KIOSK CONNECTION – connection window should come up during initial setup or when you lose connection



CLOUDHOOD KIOSK CONNECTION – connection window should come up during initial setup or when you lose connection



CLOUDHOOD KIOSK CONNECTION – connection window should come up during initial setup or when you lose connection



CLOUDHOOD ONLINE ORDER –Mangement -> Operations -> Secret Key Strokes

The screenshot shows the 'CLOUD CONNECTION' tab in the management interface. On the left, the 'DELIVERY ONLINE ORDER' section is highlighted with a red box and contains the following fields: 'DB Name on Web', 'Web Server Host', 'Web Server User Id', and 'Web Server Password'. A text annotation states 'will be provided by the web administrator'. Below these fields is a 'Test Connection' button. The 'CATERING SERVICE' section is also visible but not highlighted. On the right, the 'CONNECT TO CLOUD' section is active, showing fields for 'DB NAME ON WEB' (Store_2), 'WEB SERVER HOST' (http://131.106.6.17:6464/uniberseposInvcloud/), 'WEB SERVER USER ID' (admin), and 'WEB SERVER PASSWORD' (masked with dots). A 'Test Connection' button is also present at the bottom right.

CLOUDHOOD DEFAULT EMAIL SERVER – Mangement -> Operations -> Secret Key Strokes

The screenshot shows the 'CLOUD CONNECTION' tab with the 'SPECIAL SETTINGS' section on the left and the 'DEFAULT EMAIL SERVER' section on the right. The 'SPECIAL SETTINGS' section has a toggle for 'Use fixed same & mix 6 price'. The 'DEFAULT EMAIL SERVER' section is highlighted with a red box and contains the following fields: 'POP SERVER' (587), 'SMTP SERVER' (smtp.gmail.com), 'SMTP PORT' (587), 'USER NAME' (unibersemail@gmail.com), and 'PASSWORD' (masked with dots). A text annotation states 'will be provided by the web administrator. You can enter your own email server from Setup->General Options->Internet'. The 'SETTINGS' tab is selected at the top of the interface.

CLOUDHOOD KIOSK OPTIONS – From Main Screen - >Secret Key Strokes

DELI ORDER KIOSK SETUP

PRINTER

CUSTOMER PRINTER

RC

Logo uploaded

Print font: Arial

Left margin: 2 Points Reset Margin

KITCHEN PRINTER

RC

Print font: Arial

Left margin: 2 Points Reset Margin

Feed before starting to print

Feeding amount: 0 Points

Item Font Size: 12 px

Option Font Size: 10 px

STATION # 101

CREDIT/DEBIT CARD PAYMENT

Credit/Debit card payment on here

S-300 Setting

Allow cash payment to cashier

OTHER SETTINGS

USE OPERATING SOUND

COMMON OPERATION Brows Sound

PLACE ORDER Brows Sound

HEADER ON CUSTOMER COPY

Use button effect Setup Server

Order conformation screen timeout period: 5 Sec

Automatic restart POS time: 04:00 AM

Automatic shutdown time: 03:00 AM

Automatic restart time: 03:00 AM

Start app with windows:

BACKUP

Manual backup drive: C:

Automatic backup drive 1: F:

Automatic backup drive 2: D:

Automatic backup time: 02:00 AM

Cancel OK

CLOUDHOOD PRODUCT SEARCH OPTIONS – From Main Screen ->Secret Key Strokes

ITEM SEARCH KIOSK SETUP

DEPARTMENT

NAME	SELECT
<input checked="" type="checkbox"/> Beer	<input checked="" type="checkbox"/>
<input checked="" type="checkbox"/> Beer Gift Set	<input checked="" type="checkbox"/>
<input type="checkbox"/> Beverage	<input type="checkbox"/>
<input type="checkbox"/> Candy	<input type="checkbox"/>
<input type="checkbox"/> CBD	<input type="checkbox"/>
<input type="checkbox"/> Cheese	<input type="checkbox"/>
<input type="checkbox"/> Cigarettes	<input type="checkbox"/>
<input type="checkbox"/> Coffee	<input type="checkbox"/>
<input type="checkbox"/> Deli	<input type="checkbox"/>
<input type="checkbox"/> Desert	<input type="checkbox"/>
<input type="checkbox"/> draft beer	<input type="checkbox"/>
<input type="checkbox"/> Food	<input type="checkbox"/>
<input type="checkbox"/> Gift Card	<input type="checkbox"/>
<input type="checkbox"/> Gum	<input type="checkbox"/>
<input type="checkbox"/> Household	<input type="checkbox"/>
<input type="checkbox"/> Household 2	<input type="checkbox"/>
<input type="checkbox"/> Household No Tax	<input type="checkbox"/>
<input type="checkbox"/> Liquor	<input type="checkbox"/>
<input type="checkbox"/> Medicine	<input type="checkbox"/>
<input type="checkbox"/> Newspaper	<input type="checkbox"/>
<input type="checkbox"/> Pet Food	<input type="checkbox"/>
<input type="checkbox"/> processing fee	<input type="checkbox"/>
<input type="checkbox"/> Snack	<input type="checkbox"/>

Select All Select None

SEARCH FILTERS

In Stock Only Country

Season Use Style

Price

FROM \$1.00 TO \$1.99

DATABASE CONNECTION

Please, check server and network connection.

SERVER IP: 131.106.6.17 Change

NETWORK PORT: 9510 Change

Cancel Connect

FROM \$0.00 TO \$0.00

OTHERS

Store Logo Brows Image

Image on Body Brows Image

Base Image Brows Image

Manufacturer Setup Server

Local Server IP

CLOUDHOOD KDS SETTINGS – From Main Screen-> Secret Key Strokes * In Retail, POS sends orders all KDS. You can choose to send the order to specific KDS

UNIBERSE KDS SETTINGS

KDS STATION

KDS Station #:

KITCHEN PRINTER

Use Local Kitchen Printer

None

Print Font:

Left Margin: Points

Feed before starting to print

Feeding amount: Points

Item Font Size: px

Option Font Size: px

PROCESSING STEP

Processing Step Is Required OFF

Automatically Print Kitchen Copy When It's Started

Cooker Name is Required

ONLINE ORDER

Online Order Is Available OFF

DISPLAY ORDER STATUS FOR CUSTOMERS

Display Order Status On 2nd Monitor or TV OFF

Columns for Status Display: 3 Columns 4 Columns

Select Screen Resolution: 720p 1080p 2160p

Popup Message When The Order is Ready

Timeout: sec

Remove Timeout Order on The Ready Section

Timeout: min

Display Images or Video on Available Section

FULL SCREEN Use Slideshow 3/4 SCREEN Use Slideshow

2/4 SCREEN Use Slideshow 1/4 SCREEN Use Slideshow

LOGIN

None

User Login Is Required

WAITING TIMERS ON THE BUTTON

Order Issued

15 min Change

20 min Change

SPEAK "READY ORDER"

Speak "Ready Order" for Customers OFF

Speak before order # Ord... Speak after order #

Voice:

▶ 🔊

AUTOMATIC SYSTEM BACKUP & SHUTDOWN

Automatic System Restart Time 03:00 A OFF

Automatic System Shutdown Ti... 03:00 A OFF

Cancel

Settings for Online Orders

OK

CLOUDHOOD KDS SETTINGS -> KDS SETTINGS FOR ONLINE ORDERS

SETTING FOR ONLINE ORDERS

PRINTER FOR ONLINE ORDER MANAGEMENT

Use Local Kitchen Printer

None

Print Font:

Left Margin: Points

Feed before starting to print

Feeding amount: Points

Item Font Size: px

Option Font Size: px

SETTINGS FOR ONLINE ORDER MANAGEMENT

Warning Sign OFF

When ordered items are over QTY in each hour

DISPLAY FOR CUSTOMERS ON TV

Display Ready Order at min earlier then pickup time